

Vacuum Filters and Mufflers



Vacuum Exhaust Mufflers



Compact Plastic Exhaust Mufflers

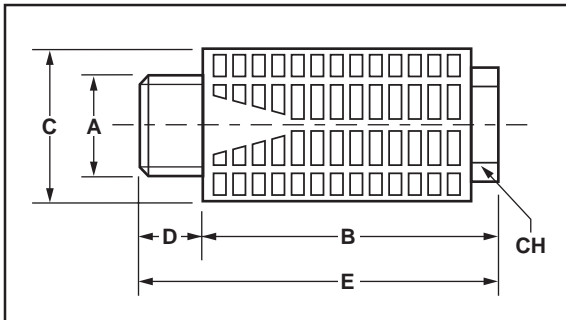
ANVER Compact Exhaust Mufflers are supplied standard on our single stage air powered vacuum pumps. They are also practical for quieting air valves, rotary or impact tools, air motors, and other similar machinery.

Features:

- Reduces Noise Levels to within OSHA Standards
- Polyethelene Element is Impervious to Solvents
- Exhaust May Be Directed Away From Personnel
- Minimal Pressure Drop - Does Not Impede Equipment Performance
- Plastic Construction Prevents Damage From Inadvertent Cross Threading

Specifications:

Standard Materials: Nylon Housing and Baffle, Polyethelene Element
 Maximum Temperature: 194°F (90°C)
 Maximum Operating Pressure: 150 psig



ANVER Item No.	A Thread G	B Body Length in. (mm)	C Overall Width in. (mm)	D Thread Length in. (mm)	E Overall Length in. (mm)	CH Hex in. (mm)	Filter Size in Microns	Weight oz. (g)	Used for Generator #
JMU17	G 1/8" NPT	1.11 (28)	0.62 (16)	0.23 (6)	1.32 (33)	0.39 (9)	50	0.1 (2.8)	N/A
JMU19	G 1/4"	1.42 (36)	0.77 (20)	0.29 (7)	1.69 (43)	0.50 (13)	50	0.2 (5.7)	JB12 JB15
JMU21	G 3/8" NPT	1.85 (47)	0.96 (24)	0.41 (10)	2.22 (56)	0.66 (17)	50	0.4 (11.3)	N/A
JMU24	G 1/2"	1.81 (46)	0.96 (24)	0.40 (10)	2.22 (56)	0.66 (17)	50	0.4 (11.3)	JB20
JMU25	G 1/2"	2.90 (74)	1.25 (32)	0.50 (13)	3.40 (86)	1.57 (40)	50	N/A	JB25

► This spec sheet was adapted for print from our website. Additional information and photos are available at www.anver.com. 8020601