

## Drum Vacuum Filters



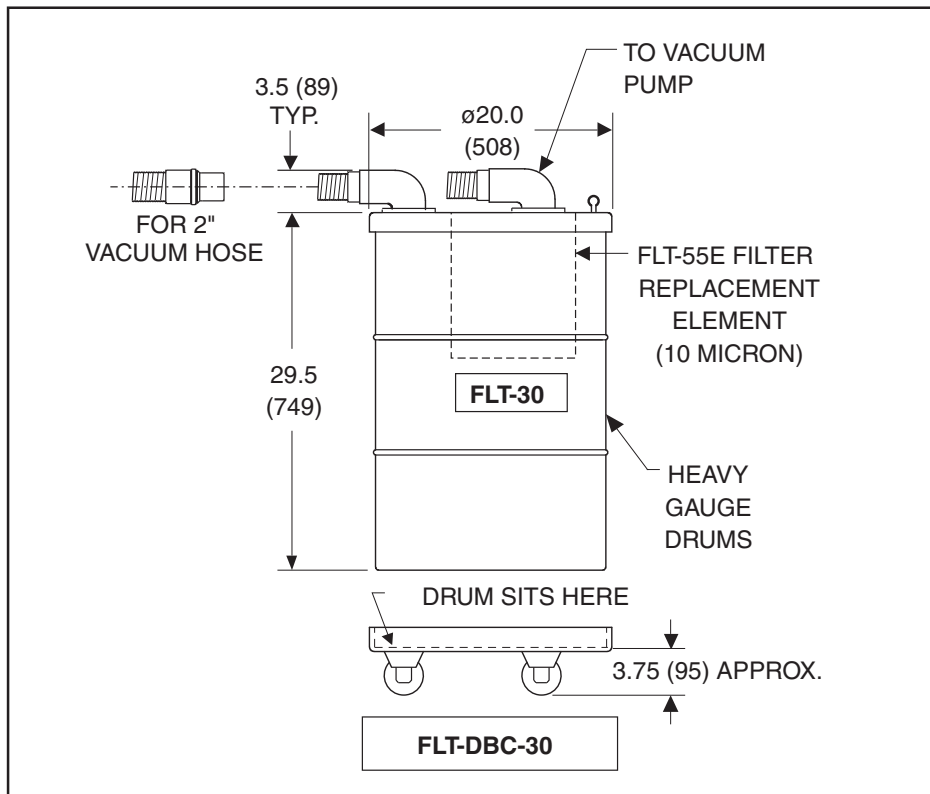
### For Vacuum Tube Lift Systems and other High-Flow Applications

ANVER Drum Filters are specially designed for use with vacuum tube lift systems but are suitable for many other applications. The drums are constructed of very heavy-gauge material to withstand the high vacuum levels typical with a vacuum system. A hose cuff slips inside the fitting on the filter cover. Suitable for vacuum levels up to 18" of Hg.

Rugged steel stands that accommodate the filters and the pumps are available. An optional base with casters is available to facilitate moving the filter.

Note: Do not place these drum filter heads on other drums in your facility, as they may not have heavy-duty walls as do the ANVER drum filters. This may cause the drums to implode, causing sudden vacuum loss.

ANVER Item No.	Description
FLT-30	Filter, Drum 30 Gallon
FLT-30-SS	Filter, Drum 30 Gallon Stainless Steel
FLT-55E	Filter Element, for FLT-55 & FLT-30 (10 Micron)
FLT-DBC-30	Drum Base With Casters for FLT-30
ST-3	Floor Mount Generator Stand
ST-W1	Generator Wall Mount Bracket



► This spec sheet was adapted for print from our website. Additional information and photos are available at [www.anver.com](http://www.anver.com). 9051801

36 Parmenter Road • Hudson MA 01749 USA • 978-568-0221 • 800-654-3500 • FAX 978-568-1570 • [www.anver.com](http://www.anver.com) • E-Mail: [sales@anver.com](mailto:sales@anver.com)