



Shown to the left is the main line of JB series vacuum generators. These pumps can handle the majority of applications more economically than most air vacuum pumps. The vacuum control of these generators is served through a manual or automatic control valve situated on the compressed air supply line (not included in this version).

Usage:

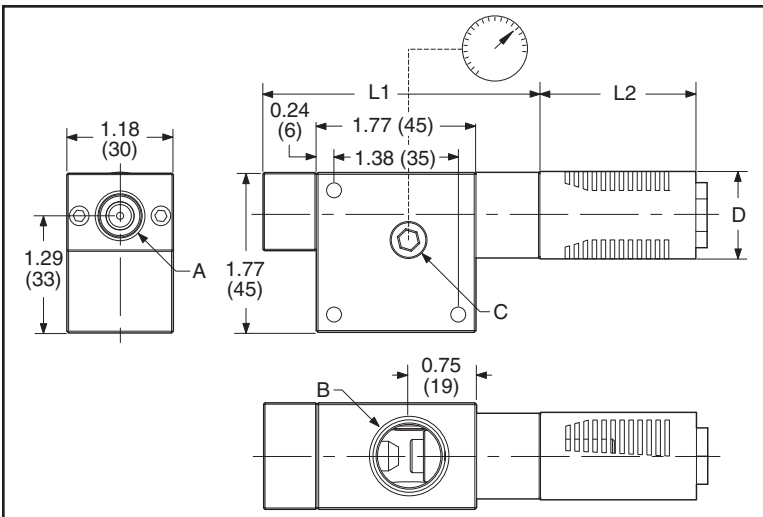
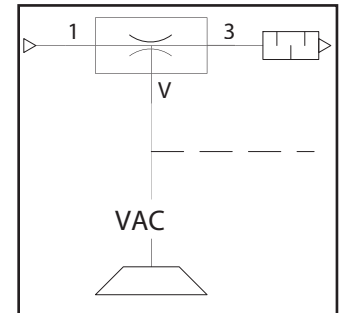
This system is recommended for use where vacuum is required on an intermittent basis or when a basic, low cost functional design is desired. As these pumps have no internal moving parts, they are extremely reliable and require no maintenance. Just keep debris out with a filter and use dry clean air and these pumps will work almost indefinitely.

Specifications:

Compressed Air: 50 Micron, Filtered, Non-lubricated
Operating Temperature: -10 to 80°C (14 to 176°F)
Optimum Operating Pressure: 5 bar (72.5 psi)

Features/Available Options:

- Vacuum Level: 90% (27" Hg)
- Vacuum Gauge
- Mufflers
- Vacuum Port Extension
- Vacuum Switches
- Control Valve
- Pilot: 24V DC, Pneumatic, or 100V 60 Hz AC



Part No.	Nozzle Size	A Air Inlet	B Vacuum Port	C Optional Gauge Port	D in. (mm)	L1 In (mm)	L2 In (mm)	Air Consumption scfm (ml/min.)	Vacuum Flow scfm (ml/min.)	Vacuum Level in Hg (-mmHg)
JB12	12	1/4" NPT	1/2" NPT	1/8" NPT	0.76 (19)	3.22 (81.8)	1.37 (35)	2.10 (59)	1.90 (54)	27 (690)
JB12-X	12	G 1/4"	G 1/2"	G 1/8"	0.76 (19)	3.22 (81.8)	1.37 (35)	2.10 (59)	1.90 (54)	27 (690)
JB15	15	1/4" NPT	1/2" NPT	1/8" NPT	0.76 (19)	3.63 (92.2)	1.37 (35)	3.20 (91)	2.65 (75)	27 (690)
JB15-X	15	G 1/4"	G 1/2"	G 1/8"	0.76 (19)	3.63 (92.2)	1.37 (35)	3.20 (91)	2.65 (75)	27 (690)
JB20	20	1/4" NPT	1/2" NPT	1/8" NPT	0.95 (24)	4.65 (118.1)	1.83 (47)	6.10 (170)	4.50 (130)	27 (690)

* Recommended for applications where debris may be present.



Vacuum Cups and Suction Cups

JB Series Single-Stage Vacuum Pumps

Part No.	Nozzle Size	A Air Inlet	B Vacuum Port	C Optional Gauge Port	D in. (mm)	L1 In (mm)	L2 In (mm)	Air Consumption scfm (ml/min.)	Vacuum Flow scfm (ml/min.)	Vacuum Level in Hg (-mmHg)
JB20-X	20	G 1/4"	G 1/2"	G 1/8"	0.95 (24)	4.65 (118.1)	1.83 (47)	6.10 (170)	4.50 (130)	27 (690)
JB25	25	1/4" NPT	1/2" NPT	1/8" NPT	0.95 (24)	5.22 (132.2)	1.83 (47)	9.20 (260)	7.06 (200)	27 (690)
JB25-X	25	G 1/4"	G 1/2"	G 1/8"	0.95 (24)	5.22 (132.2)	1.83 (47)	9.20 (260)	7.06 (200)	27 (690)
JB30	30	1/4" NPT	1/2" NPT	1/8" NPT	1.34 (34)	6.37 (161.8)	3.81 (97)	14.0 (400)	9.50 (270)	27 (690)
JB30-X	30	G 1/4"	G 1/2"	G 1/8"	1.34 (34)	6.37 (161.8)	3.81 (97)	14.0 (400)	9.50 (270)	27 (690)

Ordering Information and Example:

JB	12	H	G
Series JB	Nozzle 12 15 20 25 30	Vacuum Level H = 90%-Standard	Accessories D = Electrical Vacuum Switch w/Display G = Gauge L = Electrical Vacuum Switch w/LED M = Electro-mechanical Vacuum Switch N = Pneumatic Vacuum Switch V = Vacuum Port Extension

Example: Model **JB12HG** is a **JB** Series Vacuum Generator with Nozzle Size **12**, Standard (**H**) Vacuum Level, and Optional Vacuum Gauge