

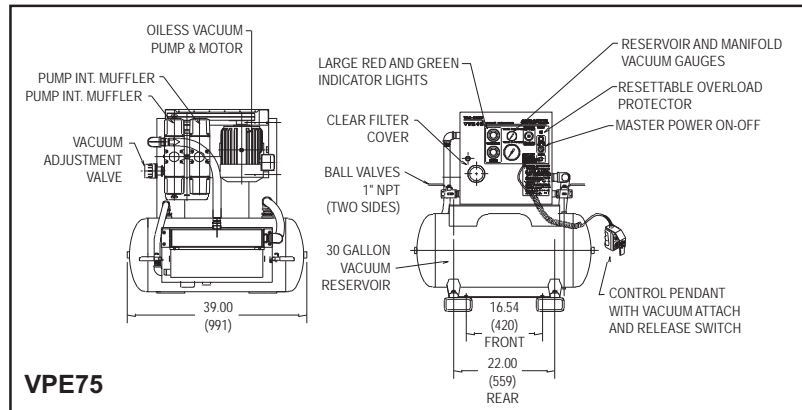
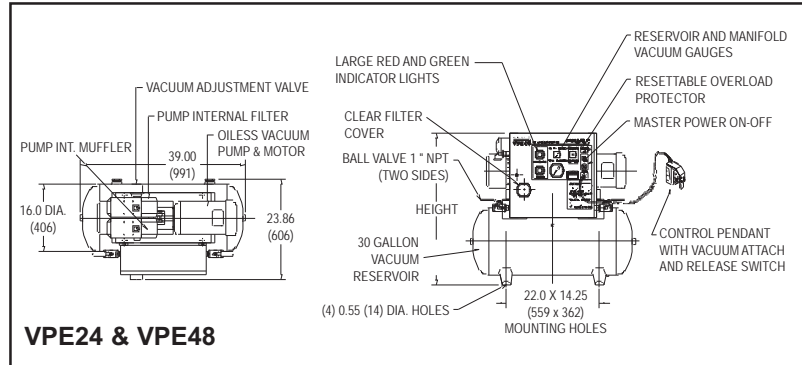


### VPE Series Self-Contained Vacuum Stations

#### Features:

- Complete Vacuum Station with quiet pump, reservoir and all necessary controls
- Dry, oil-free pump avoids contamination
- Controls include:
  - Power on-off switch
  - Adjustable vacuum switch to control vacuum level
  - Vacuum gauges, reservoir and manifolds
  - Adjustable red/green indicator lights and adjustable low vacuum warning horn
- Pendant switch attach/release

Available Voltage	VPE24	VPE48	VPE75
115-1-60	X	X	
230-1-60	X	X	X
230-3-60	X	X	X
460-3-60	X	X	X
575-3-60	X	X	X
110-1-50	X	X	
220-1-50	X	X	X
220-3-50	X	X	X
380-3-50	X	X	X
440-3-50	X	X	X
575-3-50	X	X	X



ANVER Item No.	Vacuum Flow at 60 Hz SCFM (l/min.)	Vacuum Flow at 50 Hz SCFM (l/min.)	Max. Vacuum in. Hg (mm Hg)	Motor HP (kW)	H Height in. (mm)	Weight lb. (Kg)
VPE24	24 (680)	20 (566)	26.5 (67.3)	1.5 (1.1)	35.38 (899)	295 (134)
VPE48	50 (1416)	40 (1133)	25.0 (63.5)	3 (2.2)	35.38 (899)	425 (193)
VPE75	75 (2124)	65 (1841)	25.0 (63.5)	5 (3.7)	43.13 (1100)	655 (297)