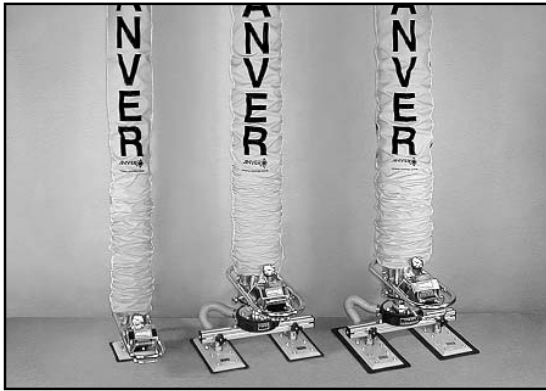




Ergonomic Vacuum Tube Lifters

Vacuum Lifting Tubes and Lifting Tube Covers



ANVER Vacuum Lifting Tubes feature Heavy-Duty Steel-Wire Reinforced Construction. They are Surrounded by a Double Cloth, then Film Wrapped, making for a long lasting economical choice in a Vacuum Lifting Tube.

ANVER vacuum lifting tubes not only make your vacuum tube lifting system safer by reducing the danger of vacuum leakage, they also make maintenance less expensive. As the leading North American manufacturer of Vacuum Tube Lifting Systems, ANVER can offer these high quality replacement vacuum lifting tubes at prices substantially lower than those of smaller competitors or expensive imported brands. The use of ANVER Vacuum Tube Lifting Clamps and Rubber Clamping Bands along with our new Lifting Tube Covers allow you to easily complete the installation of replacement lift tubes with a professional appearance.

- ANVER is the #1 supplier of Vacuum Lifting Tubes and Vacuum Tube Lifting Systems in North America. Our sales volume equals top value for you.
- Replacements are available for all vacuum tube lifter brands, foreign and domestic, including spin-on adapter styles.
- All ANVER Vacuum Lifting Tubes are now available with Lift Tube Covers for Maximum Protection.
- ANVER has the lowest prices in the industry, due to our high production volume.
- We can reduce your Lift Tube Replacement Costs substantially.
- Top quality for lasting value.
- Usually Shipped in 24 hours packed in individual boxes.

Lift Tube Model Number	Dia. in. (mm)	Length ft. & in. (m)	Package Dim. in. (cm)	Shipping Wt. lb (kg)	Lift Tube Cover Number
LT090-2.5	3.54" (90)	8' 3" (2.5)	5 x 5 x 62" (13 x 13 x 157)	11 (5)	LTC100-2.5
LT090-4.0	3.54" (90)	13' 2" (4.0)	5 x 5 x 62" (13 x 13 x 157)	15 (7)	LTC100-4.0
LT100-2.5	4.0" (100)	8' 3" (2.5)	6 x 6 x 40" (15 15 102)	8 (4)	LTC100-2.5
LT100-4.0	4.0" (100)	13' 2" (4.0)	6 x 6 x 50" (15 x 15 x 127)	14 (6)	LTC100-4.0
LT120-2.5	4.7" (120)	8' 3" (2.5)	6 x 6 x 40" (15 x 15 x 102)	10 (5)	LTC120-2.5
LT120-4.0	4.7" (120)	13' 2" (4.0)	6 x 6 x 54" (15 x 15 x 137)	15 (7)	LTC120-4.0
LT130-3.0	5.0" (130)	10' 0" (3.0)	6 x 6 x 51" (15 x 15 x 130)	15 (7)	LTC130-3.0
LT130-4.6	5.0" (130)	15' 0" (4.6)	6 x 6 x 61" (15 15 102)	20 (9)	LTC130-4.6
LT140-2.5	5.5" (140)	8' 3" (2.5)	8 x 8 x 40" (20 x 20 x 102)	12 (5)	LTC140-2.5
LT140-4.0	5.5" (140)	13' 2" (4.0)	8 x 8 x 54" (20 x 20 x 137)	19 (9)	LTC140-4.0
LT160-2.5	6.3" (160)	8' 3" (2.5)	8 x 8 x 40" (20 x 20 x 102)	14 (6)	LTC160-2.5

7051201 ► This spec sheet was adapted for print from our website. Additional information and photos are available at www.anver.com.

Ergonomic Vacuum Tube Lifters



Vacuum Lifting Tubes and Lifting Tube Covers

Lift Tube Model Number	Dia. in. (mm)	Length ft. & in. (m)	Package Dim. in. (cm)	Shipping Wt. lb (kg)	Lift Tube Cover Number
LT160-4.0	6.3" (160)	13' 2" (4.0)	8 x 8 x 54" (20 x 20 x 137)	21 (10)	LTC160-4.0
LT180-2.5	7.0" (180)	8' 3" (2.5)	8 x 8 x 40" (20 x 20 x 102)	16 (7)	LTC180-2.5
LT180-3.0	7.0" (180)	10' 0" (4.0)	8 x 8 x 54" (20 x 20 x 137)	22 (10)	LTC180-3.0
LT180-4.0	7.0" (180)	13' 2" (4.0)	8 x 8 x 54" (20 x 20 x 137)	22 (10)	LTC180-4.0
LT200-2.5	7.9" (200)	8' 3" (2.5)	9.5 x 9.5 x 61" (24 x 24 x 152)	23 (10)	LTC200-2.5
LT200-4.0	7.9" (200)	13' 2" (4.0)	9.5 x 9.5 x 61" (24 x 24 x 152)	29 (13)	LTC200-4.0
LT250-2.5	9.8" (250)	8' 3" (2.5)	14 x 14 x 60" (36 x 36 x 155)	30 (14)	LTC250-2.5
LT250-4.0	9.8" (250)	13' 2" (4.0)	14 x 14 x 70" (36 x 36 x 178)	40 (18)	LTC250-4.0

ANVER Vacuum Lifting Tubes are manufactured with an orange or yellow outside wrapping. ANVER has also supplied tubes over the years in a variety of other colors including white, black, grey and blue as different fabrics and coatings became available. We reserve the right to change the color as we continually try to improve the product. Currently, orange and ANVER safety yellow are our main colors. Thank You

Guidelines for Replacing Vacuum Lifter Tubes

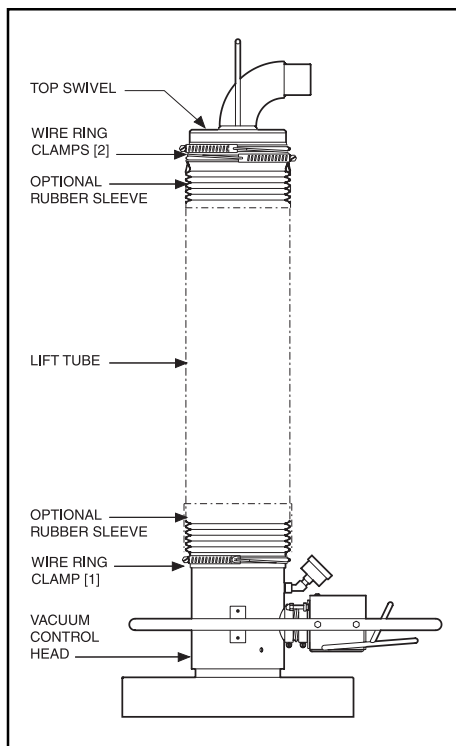
Vacuum Lift Head and Swivel Preparation

Before installing the replacement vacuum lifter tube, be sure the vacuum head and swivel head are clean and free from any previous residue.

Replacement Vacuum Lift Tube Installation

Before attempting lift tube replacement, pre-stretch the tube lengthwise as much as possible. Smooth and pull outward on the tube ends, removing any tendency to curl inward. Clamping the top swivel and control head in a bench vice or having an assistant help during tube installation is highly recommended. Slide rubber sleeves (optional) and wire ring clamps (see diagram) over the ends of the vacuum tube and temporarily tighten the lift tube over the top swivel and gradually pull tube all around until the top of the tube is even with the top surface of the nylon ring. A screwdriver used as a lever and needle-nose pliers help to ease the tube into position. Secure the top of the tube to the swivel with two clamps ensuring that the wire rings on the clamp sit evenly within the crests of the tube without crossing over. In a similar manner, attach the other end of the vacuum tube to the lift head. Secure in place with one or two wire ring clamps depending on size. Take special care to position the tube evenly all around, ensuring that all holes in the vacuum head are covered by the tube. When replacing the vacuum tube on the VT-160 size only, be sure to position the lower clamp below the raised band on the vacuum head to provide the best possible attachment between control head and vacuum tube. ANVER offers seamless Rubber Sleeves to conceal the wire clamps if so desired. Their use is optional but they make for a cleaner transition.

Note: Use extreme caution not to puncture the outer wall of the tube during preparation and installation procedures. Doing so will weaken the tube and may cause vacuum leakage. If the vacuum tube wall is accidentally punctured, cut away the damaged end and reattach to the lift head or swivel. A very serious personal injury or unit failure may result if the tube is not correctly installed. ANVER recommends replacement of all vacuum lift tubes on multiple tube lifter systems.



► This spec sheet was adapted for print from our website. Additional information and photos are available at www.anver.com. 7051201