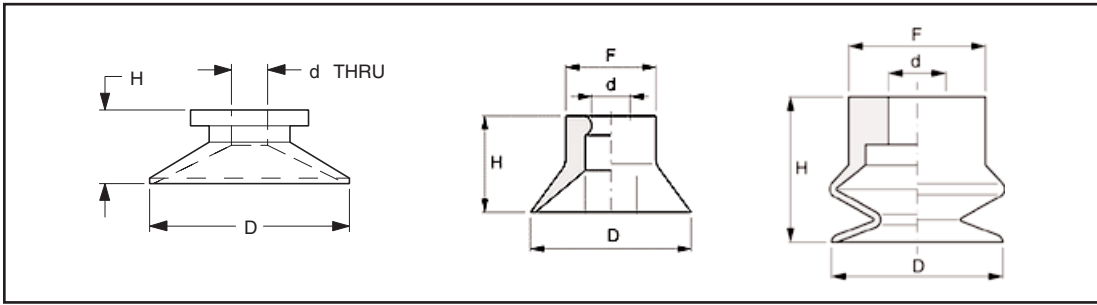


Push-In Mount Series Suction Cups

ANVER packaging series suction cups are excellent for paper and carton handling equipment, where they are used for gripping, pulling, or feeding stock.

Features:

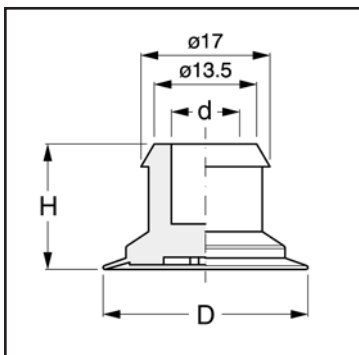
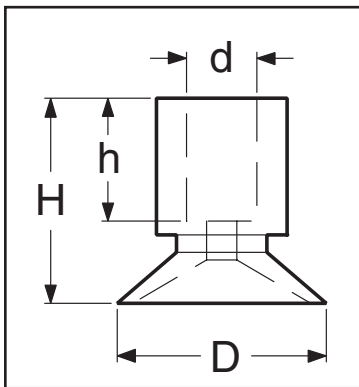
- Simple Mounting - Attach directly to pipe or a hose barb.
- Large diameter orifice for maximum flow.
- Rapid attach/release.
- Available in non-marring natural rubber or long-lasting neoprene.
- Available with cleated bottom to eliminate puckering or smooth for rigid materials.
- Economical and reliable replacements for OEM equipment.



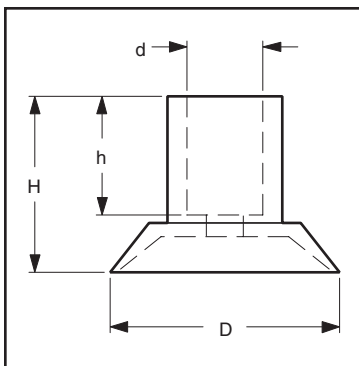
ANVER Item No.	D dia. in. (mm)	d dia. in. (mm)	H in. (mm)	Bottom Surface	Material
SUM020	0.79 (20)	0.31 (8)	0.59 (15)	Smooth	Natural Rubber
SUM025	0.98 (25)	0.24 (6)	0.59 (15)	Smooth	Natural Rubber
FO25-NR	0.98 (25)	0.24 (6)	0.59 (15)	Smooth	Natural Rubber
BO1.5-20-TPU	0.79 (20)	0.28 (7)	0.67 (17)	Smooth	Natural Rubber

Vacuum Cups and Suction Cups

Push-in Mount Style Cups For the Packaging Industry



ANVER Item No.	D Dia. in (mm)	d Dia. in (mm)	H in (mm)	h in (mm)	Bottom Surface	Material
SUB24NR	0.94 (24)	0.39 (10)	1.02 (26)	0.63 (16)	Smooth	Natural Rubber
SUB25LNR	0.98 (25)	0.39 (10)	0.98 (25)	0.63 (16)	Cleats	Natural Rubber
SUB27SIT	1.06 (27)	0.36 (9)	0.65 (16.5)	N/A	Cleats	Silicone
SUB34NR	1.34 (34)	0.39 (10)	0.94 (24)	0.59 (15)	Cleats	Natural Rubber
SUB34NE	1.34 (34)	0.39 (10)	0.94 (24)	0.59 (15)	Cleats	Neoprene
SUB40NE	1.57 (40)	0.31 (8)	0.79 (20)	0.59 (15)	Cleats	Neoprene



ANVER Item No.	D Dia. in (mm)	d Dia. in (mm)	H in (mm)	h in (mm)	Bottom Surface	Material
SUB25NR	0.98 (25)	0.22 (5.5)	0.79 (20)	0.24 (6)	Cleats	Natural Rubber
SUB26NR	1.02 (26)	0.39 (10)	1.02 (26)	0.63 (16)	Smooth	Natural Rubber
SUB30NR	1.18 (30)	0.43 (11)	0.91 (23)	0.63 (16)	Cleats	Natural Rubber
SUB32NR	1.26 (32)	0.39 (10)	0.98 (25)	0.63 (16)	Cleats	Natural Rubber
SUB33NR	1.30 (33)	0.39 (10)	0.98 (25)	0.63 (16)	Smooth	Natural Rubber