

Vacuum Cups & Suction Cups



VC Series: VC25, VC35, VC40 and VC45



Production quality construction with a universal design make ANVER VC Series Vacuum Cups suitable for most applications. Thick rubber bonded to a machined aluminum base make these vacuum cups rugged and long lasting. VC Vacuum Cups are well suited for high duty use found in the automotive industry and in press feeding operations.

Features:

- Rugged construction design with deep threaded mounting hole for use in heavy production.
- Long low-angle lip requires little pressure to make initial contact. This flexibility also compensates for inaccuracies in cup height.
- Two inside sealing edges make contact after vacuum is attained and become the main sealing edges for safety.
- Strengthened outside lip helps achieve a fast, even release.
- Durable, soft rubber bonded to a stiff aluminum hub gives these vacuum cups an excellent non-skid grip.
- Cleated bottom makes these vacuum cups excellent for both horizontal and vertical loads.

Recommended Usage:

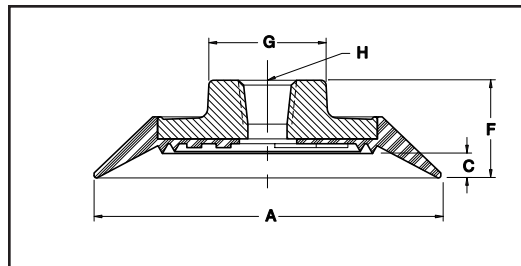
- On light gauge sheet and other thin materials to thick blocks.
- On lightly textured surfaces, such as fiberglass panels, plastic, auto panels, auto glass, etc.
- On wavy or contoured surfaces.
- These vacuum cups have a relatively large port, making them suitable for handling even porous materials.
- Suspension Assemblies are available in a variety of styles and sizes.

Vacuum Cup Materials:

- The Standard Stock material is Blue Neoprene.
- Silicone is sometimes in stock while other compounds are available on special order; contact factory for details.

Vacuum Cup Materials:

- The Standard Stock material is Blue Neoprene.
- Silicone is sometimes in stock while other compounds are available on special order; contact factory for details.



ANVER Item No.	A Dia. in. (mm)	A' Dia. in. (mm)	C Flex in. (mm)	F Height in. (mm)	G Flat in. (mm)	H Suspension Port	*Rated Load lb (kg)	Weight lb (kg)	Adapter Fitting for Suspension	Suspension Needed
VC25	2.50 (63.5)	2.75 (70)	0.26 (7)	1.14 (29)	0.98 (25)	1/4" NPT	15 (6.8)	0.10 (0.05)	None Needed	SLSA3 Series
VC35	3.50 (89)	3.75 (95)	0.33 (8)	1.38 (35)	0.98 (25)	3/8" NPT	30 (13)	0.15 (0.07)	3/8" NPT M 1/4" NPT F	SLSA3 Series
VC40	4.00 (100)	4.25 (110)	0.37 (9.4)	1.18 (30)	0.95 (24)	3/8" G	45 (20)	0.18 (0.08)	Info to Come	SLSA3 Series
VC45	4.50 (114)	4.63 (117)	0.38 (10)	1.61 (41)	1.26 (32)	3/8" NPT	55 (24)	0.35 (0.16)	3/8" NPT M 1/4" NPT F	SLSA3 Series

*The cup capacities shown above are based on 24"Hg at sea level with a safety factor of two (2) in the horizontal (flat). Vertical Load Capacity is half of the listed Horizontal Load Capacities above.

Rated Load Capacities are estimated; actual capacity will vary based on the load surface and the level of vacuum.